

SOCCER 23



ASB

ASB 2023

YOUR KIT YOUR WAY



 **FreeStyle™**
SUBLIMATION



**Go Full
Custom**
**or Go Fast
with Turbo**





Featuring
coolcore®
ELITE



LINE UP

CoolCore® Elite	4
FreeStyle Sublimation	10
Stock Jerseys	12
Shorts	28
Socks	31
Ladies CoolCore® Elite	32
Ladies FreeStyle Sublimation	36
Ladies Stock Jerseys	38
Warm-Ups	42
Bags	48
Compression	50
Training	52
ASB Kit Packages	58

ICONS

color secure®

color secure® technology helps prevent dye migration



Dry-Excel™

Moisture evaporation and wicking fabric



Moisture Management

Fabric wicks moisture away keeping the body cool & dry



Odor Resistant

Odor Resistant technology keeps garments fresher longer



4-Way Stretch

Stretch properties allow for increased mobility



UPF

Garment protects against harmful UV rays



Water Resistant

Resists rain & water to keep the body protected & dry





STAY
MATCH
DAY
COOL

Coolcore®

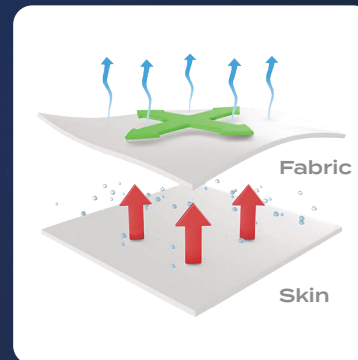
Coolcore® is engineered to distribute moisture quickly throughout the garment.

As the moisture spreads it dries faster to keep you cool and comfortable all match long while providing UPF 50 sun protection.

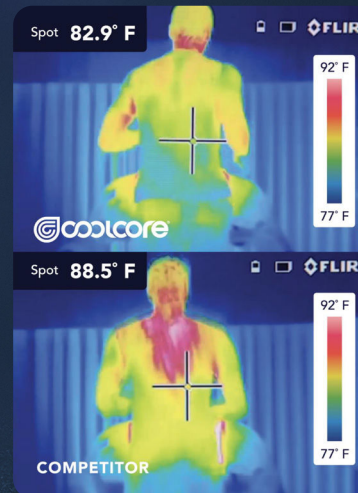
Regulated
Evaporation

360° Moisture
Transportation

Moisture
Wicking



Patented Fabric
Technology



Technology Comparison

The same athlete after
20 minutes of activity

Explore
Coolcore®
Elite



321550
pg. 7



321555
pg. 9



321560
pg. 9



325460
pg. 7



321552
pg. 33



321557
pg. 35



321562
pg. 35



325462
pg. 33

coolcore® ELITE

*Elite Design Options available Spring 2023



321550
Elite Horizontal*



321550
Elite Lightning*

321560
pg. 9
Elite Block*

325460

NEW

**FREESTYLE SUBLIMATED
ELITE SOCCER JERSEY**

321550	Adult	S-2XL	MSRP 53.40
321551	Youth	XXS-L	MSRP 52.40

- 87% polyester/13% spandex with Coolcore® technology
- 92% polyester/8% spandex mesh shoulder & back inserts with Coolcore® technology
- Garment protects against the sun with 50+ UPF
- Tagless label
- Two piece collar
- Set-in sleeves

COORDINATING LADIES | **321552** pg. 33



Faded Chevron



Goal Kick

AVAILABLE MAY 2023



COORDINATING LADIES | **325462** pg. 33

NEW

PLAY90 COOCORE® SOCCER SHORTS

325460	Adult	S-3XL	MSRP 24.00
325461	Youth	S-XL	MSRP 23.00

- 88% polyester/12% elastane Coolcore® with color secure® technology that helps prevent dye migration
- Garment protects against the sun with 50+ UPF
- Tagless label
- Covered elastic waistband with inside drawcord
- 7-inch inseam
- Youth inseam graded



BLACK 080 GRAPHITE 059 NAVY 065 ROYAL 060 WHITE 005 SCARLET 083



321550
**Elite
Vertical***

325460



*Elite Design Options available Spring 2023



321555
Elite Horizontal*



321555
Elite Block*

◀ *Perfect for
Goalkeeper
Option*

321560
Elite Block*

321560
Elite Block*

AVAILABLE SPRING 2023



For available design lines visit augustasportswear.com/sublimation

FreeStyle
SUBLIMATION



NEW

FREESTYLE SUBLIMATED ELITE LONG SLEEVE SOCCER JERSEY

321555	Adult	S-2XL
321556	Youth	XXS-L

- 87% polyester/13% spandex with Coolcore® technology
- 92% polyester/8% spandex mesh shoulder & back inserts with Coolcore® technology
- Garment protects against the sun with 50+ UPF
- Tagless label
- Two piece collar
- Set-in sleeves

COORDINATING LADIES | **321557** pg. 35



Optic



Gradient

FreeStyle
SUBLIMATION



NEW

FREESTYLE SUBLIMATED ELITE 7" SOCCER SHORTS

321560	Adult	S-2XL	MSRP 45.80
321561	Youth	XXS-L	MSRP 44.80

- 87% polyester/13% spandex with Coolcore® technology
- Garment protects against the sun with 50+ UPF
- Tagless label
- Covered elastic waistband with inside drawcord
- 7-inch inseam
- Youth inseam graded

COORDINATING LADIES | **321562** pg. 35



Optic Stripe



Faded Chevron

321555
Elite
Block*



321560
Elite
Block*



321520
**Faded
Chevron**



321810
**Faded
Chevron**



321510
Catalan



321810
**Twin
Stripe**





For available design lines visit
augustsportsweat.com/sublimation



FREESTYLE SUBLIMATED TURBO V-NECK JERSEY

321520 Adult S-2XL MSRP 41.00
322520 Youth S-L MSRP 40.00

- 100% polyester wicking knit
- Garment protects against the sun with 50+ UPF
- Tagless label
- Raglan sleeves



Clean Sheet



Whirlwind



Optic



FREESTYLE SUBLIMATED TURBO CREW NECK SOCCER JERSEY

321510 Adult S-2XL MSRP 37.60
322510 Youth S-XL MSRP 36.60

- 100% polyester wicking knit
- Garment protects against the sun with 50+ UPF
- Tagless label
- Set-in sleeves



Center Stripe Fade



Clean Sheet



Gradient



FREESTYLE SUBLIMATED TURBO SOCCER SHORTS

321810 Adult S-2XL MSRP 41.00
326810 Youth S-L MSRP 40.00

- 100% polyester wicking smooth knit
- Garment protects against the sun with 50+ UPF
- Tagless label
- Covered elastic waistband with inside drawcord
- 7-inch inseam
- Youth inseam graded



Center Stripe Fade



Clean Sheet



Optic Stripe





Back

COORDINATING LADIES | 322922 pg. 39



NEW

HAWK EVOLUTION JERSEY

322990 Adult S-3XL MSRP 20.00
322991 Youth S-XL MSRP 19.00

- 100% polyester wicking knit with color secure® technology that helps prevent dye migration
- 90% polyester/10% spandex wicking mesh inserts with color secure® technology
- Tagless label
- Low profile tapered collar
- Raglan sleeves
- Side vent detail



BLACK/WHITE 420
 COL BLUE/BLACK 292
 DK GREEN/WHITE 438
 GOLD/WHITE 245
 GRAPHITE/WHITE R04



KELLY/BLACK 342
 MAROON/WHITE 380
 NAVY/LIME 666
 NAVY/WHITE 301
 ORANGE/WHITE 320



POWER BLUE/WHITE 834
 POWER ORANGE/BLACK Y59
 POWER YELLOW/BLACK 457
 PURPLE/WHITE 450
 ROYAL/GOLD 281



ROYAL/WHITE 280
 SCARLET/WHITE 408
 SILVER/BLACK 098
 WHITE 005
 TEAL/BLACK 435





Back



SHEFFIELD JERSEY

322970 Adult S-3XL MSRP 17.80
322971 Youth XXS-L MSRP 16.80

- 100% polyester wicking knit with color secure® technology that helps prevent dye migration
- Tagless label
- Raglan sleeves



BLACK/WHITE 420
 COLUMBIA BLUE/WHITE 293
 DARK GREEN/WHITE 438
 ELECTRIC ORANGE/BLACK 81N
 ELECTRIC YELLOW/BLACK 78N



GRAPHITE/WHITE R04
 KELLY/BLACK 342
 LIME/BLACK 530
 MAROON/WHITE 380
 NAVY/LIME 666



NAVY/WHITE 301
 ORANGE/WHITE 320
 PURPLE/WHITE 450
 POWER BLUE/BLACK 81B
 ROYAL/GOLD 281



ROYAL/WHITE 280
 SCARLET/BLACK 406
 SCARLET/WHITE 408
 WHITE 005
 VEGAS GOLD/BLACK 252





WEMBLEY JERSEY

322930	Adult	S-2XL	MSRP 19.00
322931	Youth	XS-L	MSRP 18.00

- 100% polyester wicking knit with color secure® technology that helps prevent dye migration
- Tagless label
- Two piece collar
- Set-in sleeves



ATHLETIC GOLD/ WHITE/ BLACK 661	BLACK/ GRAPHITE/ WHITE 489	COLUMBIA BLUE/ WHITE/ NAVY 533	FOREST/ BLACK/ WHITE 148	GRAPHITE/ BLACK/ WHITE U73	KELLY/ WHITE/ BLACK 609
---	-------------------------------------	--	-----------------------------------	-------------------------------------	----------------------------------



LIME/ WHITE/ BLACK 652	LIME/ WHITE/ NAVY 694	MAROON/ WHITE/ BLACK 162	NAVY/ WHITE/ GRAPHITE 372	ORANGE/ BLACK/ WHITE 322	POWER BLUE/ BLACK/ WHITE 837
---------------------------------	--------------------------------	-----------------------------------	------------------------------------	-----------------------------------	--



POWER ORANGE/ WHITE/ BLACK 68N	POWER YELLOW/ BLACK/ WHITE 458	PURPLE/ BLACK/ WHITE 497	ROYAL/ WHITE/ ATHLETIC GOLD Y80	ROYAL/ WHITE/ BLACK 150	SCARLET/ WHITE/ BLACK 588
--	--	-----------------------------------	---	----------------------------------	------------------------------------



SCARLET/ NAVY/ WHITE 656	WHITE/ BLACK/ GRAPHITE X26	VEGAS GOLD/ WHITE/ BLACK 605
-----------------------------------	-------------------------------------	--



COORDINATING LADIES/GIRLS | 1522/1523 pg. 41



CUTTER JERSEY

1517	Adult	S-3XL	MSRP 16.40
1518	Youth	XXS-XL	MSRP 15.40

- 100% polyester wicking knit with color secure® technology that helps prevent dye migration
- 92% polyester/8% spandex wicking pinhole mesh underarms
- Tagless label
- Raglan sleeves
- Longer length



Back



WHITE/ ROYAL 220	DARK GREEN/ WHITE 438	COLUMBIA BLUE/ NAVY 294	KELLY/ BLACK 342	POWER YELLOW/ BLACK 457	ATHLETIC GOLD/ WHITE 596	LIME/ WHITE 693
------------------------	--------------------------------	----------------------------------	------------------------	----------------------------------	-----------------------------------	-----------------------



POWER BLUE/ WHITE 834	POWER ORANGE/ BLACK Y59	GRAPHITE/ WHITE R04	BLACK/ GOLD 421	BLACK/ WHITE 420	MAROON/ WHITE 380	NAVY/ WHITE 301
--------------------------------	----------------------------------	---------------------------	-----------------------	------------------------	-------------------------	-----------------------



ORANGE/ WHITE 320	PURPLE/ WHITE 450	RED/ BLACK 407	RED/ WHITE 400	ROYAL/ ORANGE 284	ROYAL/ WHITE 280	VEGAS GOLD/ WHITE 250
-------------------------	-------------------------	----------------------	----------------------	-------------------------	------------------------	--------------------------------



WHITE/ BLACK 226	WHITE/ NAVY 221	WHITE/ RED 225	WHITE/ WHITE 230
------------------------	-----------------------	----------------------	------------------------

NFHS WHITE OPTION
THE SOLID WHITE JERSEY IS NFHS AWAY TEAM UNIFORM COMPLIANT WHEN PAIRED WITH ANY WHITE SOCK





Back



GLOBE JERSEY

322890	Adult	S-2XL	MSRP 27.20
322891	Youth	XS-L	MSRP 26.20

- 100% polyester wicking smooth knit
- 92% polyester/8% spandex wicking pinhole mesh back and side panels
- Three piece overlapping collar
- Set-in sleeves



ATHLETIC GOLD/ ROYAL 859	BLACK/ SCARLET 500	BLACK/ WHITE 420	COLUMBIA BLUE/ WHITE 293	GRAPHITE/ WHITE R04
-----------------------------------	--------------------------	------------------------	-----------------------------------	---------------------------



FOREST/ WHITE 436	KELLY/ WHITE 340	MAROON/ WHITE 380	NAVY/ WHITE 301	ORANGE/ BLACK 321
-------------------------	------------------------	-------------------------	-----------------------	-------------------------



POWER BLUE/ WHITE 834	POWER ORANGE/ WHITE Y60	POWER YELLOW/ KELLY Y97	ROYAL/ WHITE 280	SCARLET/ ATHLETIC GOLD W88
--------------------------------	----------------------------------	----------------------------------	------------------------	-------------------------------------



SCARLET/ WHITE 408	VEGAS GOLD/ BLACK 252	WHITE/ SCARLET 235	WHITE/ WHITE 230
--------------------------	--------------------------------	--------------------------	------------------------

NFHS WHITE OPTION
THE SOLID WHITE JERSEY IS NFHS
AWAY TEAM UNIFORM COMPLIANT
WHEN PAIRED WITH ANY WHITE SOCK





Back



HYPERVOLT JERSEY

322980	Adult	S-2XL	MSRP 23.60
322981	Youth	XS-L	MSRP 21.60

- 100% polyester wicking smooth knit
- Roller printed to reduce chance of dye migration
- Tagless label
- Low profile tapered collar
- Raglan sleeves



ATHLETIC GOLD PRINT/ BLACK 73E	BLACK PRINT/ WHITE 66E	COLUMBIA BLUE PRINT/ BLACK 79E	GRAPHITE PRINT/ WHITE D62	KELLY PRINT/ BLACK 72E
--	------------------------------	--	------------------------------------	------------------------------



LIME PRINT/ NAVY 78E	MAROON PRINT/ BLACK 74E	NAVY PRINT/ WHITE 67E	POWER PINK PRINT/ WHITE 81E	POWER YELLOW PRINT/ BLACK 84E
----------------------------	----------------------------------	-----------------------------	--------------------------------------	---



PURPLE PRINT/ WHITE 68E	ROYAL PRINT/ BLACK 71E	SCARLET PRINT/ BLACK 70E	VEGAS GOLD PRINT/ BLACK 76E	WHITE PRINT/ BLACK 69E
----------------------------------	---------------------------------	-----------------------------------	--------------------------------------	---------------------------------



Back

NEW HAWK EVOLUTION | pg. 13

COORDINATING LADIES | **322872** pg. 40



HAWK JERSEY

322870	Adult	S-2XL	MSRP 20.80
322871	Youth	XS-L	MSRP 19.80

- 100% polyester wicking knit
- Two piece collar
- Set-in sleeves



BLACK/
WHITE
420

COLUMBIA
BLUE/
BLACK
292

FOREST/
WHITE
436

GRAPHITE/
WHITE
R04

KELLY/
BLACK
342



MAROON/
WHITE
380

NAVY/
WHITE
301

POWER
BLUE/
WHITE
834

ATHLETIC
GOLD/
WHITE
596

POWER
ORANGE/
BLACK
Y59



POWER
YELLOW/
BLACK
457

RASPBERRY/
WHITE
514

ROYAL/
ATHLETIC
GOLD
W84

ROYAL/
WHITE
280

SCARLET/
WHITE
408



VEGAS
GOLD/
WHITE
250

ORANGE/
WHITE
320

LIME/
WHITE
693

WHITE/
WHITE
230

NFHS WHITE OPTION

THE SOLID WHITE JERSEY IS
NFHS AWAY TEAM UNIFORM
COMPLIANT WHEN PAIRED
WITH ANY WHITE SOCK



Back



1851



SHORT SLEEVE MESH REVERSIBLE JERSEY

1602	Adult	S-2XL	MSRP 19.60
1603	Youth	XXS-XL	MSRP 18.60

- Two layers of 100% polyester sports mesh body with color secure® technology that helps prevent dye migration
- 100% polyester wicking smooth knit collar with color secure® technology
- Tear away label
- Fully reversible for wearing on either side
- Set-in sleeves
- Each layer hemmed separately for easy embellishment



BLACK/
SCARLET
500

BLACK/
WHITE
420

DARK
GREEN/
WHITE
438

GRAPHITE/
WHITE
R04



KELLY/
WHITE
340

MAROON/
WHITE
380

NAVY/
SCARLET
S20



NAVY/
WHITE
301

ORANGE/
WHITE
320

PURPLE/
WHITE
450



ROYAL/
GOLD
281

ROYAL/
WHITE
280

SCARLET/
WHITE
408



Back



GENESIS JERSEY

322730	Adult	S-2XL	MSRP 17.40
322731	Youth	XXS-L	MSRP 16.40

- 100% polyester wicking knit



ORANGE/ WHITE 320	PURPLE/ WHITE 450	RASPBERRY/ WHITE 514	ROYAL/ WHITE 280
-------------------------	-------------------------	----------------------------	------------------------



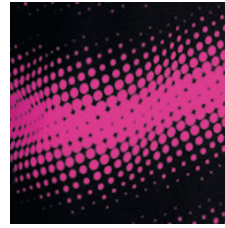
SCARLET/ WHITE 408	SILVER GREY/BLACK 470	TEAL/ WHITE 331	WHITE/ BLACK 226
--------------------------	-----------------------------	-----------------------	------------------------



ATHLETIC GOLD/WHITE 596	BLACK/ WHITE 420	COLUMBIA BLUE/WHITE 293	FOREST/ WHITE 436
-------------------------------	------------------------	-------------------------------	-------------------------



KELLY/ WHITE 340	LIME/ WHITE 693	MAROON/ WHITE 380	NAVY/ WHITE 301
------------------------	-----------------------	-------------------------	-----------------------



Prism Print Detail



PRISM GOALKEEPER JERSEY

324360	Adult	S-XL	MSRP 31.80
324361	Youth	S-L	MSRP 30.80

- 100% polyester wicking knit
- Sublimated stripe sleeves
- Two piece collar
- Raglan sleeves



ATHLETIC
GOLD/
BLACK
597

BLACK/
WHITE
420

FOREST/
WHITE
436

LIME/
BLACK
530



NAVY/
WHITE
301

ORANGE/
BLACK
321

POWER
BLUE/
BLACK
818

POWER
YELLOW/
BLACK
457



RASPBERRY/
BLACK
531

ROYAL/
BLACK
289

ROYAL/
WHITE
280

SCARLET/
BLACK
406



SCARLET/
WHITE
408

WHITE/
BLACK
226



7-inch
inseam
(Youth
inseam
graded)

5-inch
inseam

Ladies Fit



6 1/2-inch
inseam
(Youth
inseam
graded)

COOLCORE®

AVAILABLE SPRING 2023



NEW

PLAY90 COOCORE® SOCCER SHORTS

325460	Adult	S-3XL	MSRP 24.00
325461	Youth	S-XL	MSRP 23.00
325462	Ladies	XS-2XL	MSRP 24.00

- 88% polyester/12% elastane Coolcore® with color secure® technology that helps prevent dye migration
- Garment protects against the sun with 50+ UPF
- Tagless label
- Covered elastic waistband with inside drawcord



BLACK 080 GRAPHITE 059 NAVY 065 ROYAL 060 WHITE 005 SCARLET 083



ATHLETICO SHORTS

325450	Adult	S-2XL	MSRP 19.00
325451	Youth	XS-L	MSRP 18.00

- 100% polyester wicking smooth knit with color secure® technology that helps prevent dye migration
- Tagless label
- Covered elastic waistband with inside drawcord



BLACK/BLACK 425 BLACK/WHITE 420 DARK GREEN/WHITE 438 GRAPHITE/WHITE R04 KELLY/WHITE 340



MAROON/WHITE 380 NAVY/WHITE 301 ROYAL/WHITE 280 SCARLET/WHITE 408 WHITE 005



7-inch
inseam
(Youth
inseam
graded)



PRIMO SHORTS

325390	Adult	S-2XL	MSRP 15.20
325391	Youth	XXS-L	MSRP 14.20

- 100% polyester wicking knit
- Covered elastic waistband with inside drawcord



7-inch
inseam
(Youth
inseam
graded)

7-inch
inseam

Ladies Fit



OCTANE SHORTS

1425	Adult	S-3XL	MSRP 8.40
1426	Youth	XXS-L	MSRP 8.40
1423	Ladies	S-2XL	MSRP 8.40

- 100% polyester wicking knit
- Full-cut
- Tagless label
- Covered elastic waistband with inside drawcord



* Maroon & Purple shades can vary by brand, please contact our Customer Care with questions



UNITED BACKPACK

NEW

327930 11.5"W x 19"H x 9.5"D
MSRP 61.00

- 600-denier polyester with PVC coating
- 210-denier nylon with PVC coating
- Large main interior compartment with two corded zipper pulls
- Large front ventilated compartment with two corded zipper pulls
- Zippered pocket with brushed interior for valuables
- Front pocket with corded zipper pull with hidden inside mesh ball holder that fits Volleyball, Soccer or Basketballs
- Two mesh side pockets
- Adjustable buckles on sides to secure baseball bat
- Internal zippered mesh valuables pocket
- Key clip inside main compartment
- Padded back for support and comfort
- Web handle at top of backpack
- Adjustable padded shoulder straps



BLACK
080



GRAPHITE/
BLACK
172



NAVY/
BLACK
308



Back



Heal/Toe Construction



Back



Uncuffed

Heal/Toe Construction



IMPACT+

NEW

IMPACT+ CHILL SOCKER SOCKS



329130 Large (10-13) MSRP 18.40
 Medium (9-11)
 Small (7-9)

- 93% recycled polyester/6% rubber/1% other fibers
- Soil-release properties
- Knee-length sock with fold-down cuff
- Extra cushioning and support in areas of the foot and ankle that are susceptible to rubbing, impact or injury
- Arch compression reduces fatigue and aids circulation
- Left and right sock construction for a better fit



BLACK/ GRAPHITE R17 DK GREEN/ BLACK 444 GRPHITE/ BLACK 172 MAROON/ BLACK 388 NAVY/ GRAPHITE 521 ROYAL/ BLACK 289 SCARLET/ BLACK 406 WHITE/ BLACK 226

IMPACT+

IMPACT+ SOCCER SOCKS



329120 Large (10-13) MSRP 11.60
 Adult Medium (9-11)
 Small (7-9)

- 85% nylon/7% polyester/5% rubber/3% spandex
- Knee-length sock with fold-down cuff
- Extra cushioning and support in areas of the foot and ankle that are susceptible to rubbing, impact or injury
- Arch compression reduces fatigue and aids circulation



BLACK/ WHITE/ GRAPHITE 355 DARK GREEN/ WHITE/ GRAPHITE 192 GRPHITE/ WHITE/ BLACK 196 KELLY/ WHITE/ GRAPHITE 65E MAROON/ WHITE/ GRAPHITE 392 NAVY/ WHITE/ GRAPHITE 372 ROYAL/ WHITE/ GRAPHITE 191 ROYAL/ ATHLETIC GOLD/ GRAPHITE 64E SCARLET/ WHITE/ GRAPHITE G14 WHITE 005

SOCCER SOCKS

6031 Large (10-13) MSRP 8.00
 Medium (9-11)
 Small (7-9)

- 80% acrylic/15% nylon/5% elastic
- Knee-length tube sock with fold-down cuff
- Fully cushioned foot



BLACK 080 GOLD 025 KELLY 030 NAVY 065 ORANGE 029 PURPLE 050 RED 040 ROYAL 060 WHITE 005

NEW

CORE MULTI-SPORT SOCKS

6922 Large (10-13) MSRP 4.40
 Medium (9-11)
 Small (7-9)
 X-Small (5-7)

- 95% polyester/15% rubber
- Knee-length tube sock



BLACK 080

*Elite Design Options available Spring 2023



321552
Elite Horizontal*

321562
pg. 35
Elite Block*



321552
Elite Horizontal*

325462



For available design lines visit augustasportswear.com/sublimation

NEW LADIES FREESTYLE SUBLIMATED ELITE SOCCER JERSEY

321552 Ladies XS-2XL MSRP 53.40

- 87% polyester/13% spandex with Coolcore® technology
- 92% polyester/8% spandex mesh shoulder & back inserts with Coolcore® technology
- Garment protects against the sun with 50+ UPF
- Tagless label
- Two piece collar
- Set-in sleeves

COORDINATING ADULT/YOUTH
321550/321551 pg. 7



Peru



Corner Kick

AVAILABLE SPRING 2023



COORDINATING ADULT/YOUTH
325460/325461 pg. 7

NEW LADIES PLAY90 COOCORE® SOCCER SHORTS

325462 Ladies XS-2XL MSRP 24.00

- 88% polyester/12% elastane Coolcore® with color secure® technology that helps prevent dye migration
- Garment protects against the sun with 50+ UPF
- Tagless label
- Covered elastic waistband with inside drawcord
- 5-inch inseam



BLACK 080

GRAPHITE 059

NAVY 065

ROYAL 060

WHITE 005

SCARLET 083



321552
Elite
Vertical*

325462



*Elite Design Options available Spring 2023



321557
Elite Vertical*

325462
pg. 33



321557
Elite Horizontal*

321562
Elite Block*

AVAILABLE SPRING 2023

For available design lines visit augustasportswear.com/sublimation



NEW

LADIES FREESTYLE SUBLIMATED ELITE LONG SLEEVE SOCCER JERSEY

321557 Ladies XS-2XL

- 87% polyester/13% spandex with Coolcore® technology
- 92% polyester/8% spandex mesh shoulder & back inserts with Coolcore® technology
- Garment protects against the sun with 50+ UPF
- Tagless label
- Two piece collar
- Set-in sleeves

COORDINATING ADULT/YOUTH
321555/321556 pg. 9



Gradient



Elite Block*



NEW

LADIES FREESTYLE SUBLIMATED ELITE 5" SOCCER SHORTS

321562 Ladies XS-2XL MSRP 45.80

- 87% polyester/13% spandex elastane with Coolcore® technology
- Garment protects against the sun with 50+ UPF
- Tagless label
- Covered elastic waistband with inside drawcord
- 5-inch inseam

COORDINATING ADULT/YOUTH
321560/321561 pg. 9



Optic Stripe



Z Stripe



321557
Elite Lightning*

321562
Elite Block*





321522
Diamond
Fade



321812
Diamond
Fade

321522
Peru



321812
Twin
Stripe



For available design lines visit
augustasportswear.com/sublimation



LADIES FREESTYLE TURBO SUBLIMATED V-NECK SOCCER JERSEY

321522 Ladies S-2XL MSRP 41.00

- 100% polyester smooth wicking knit
- Garment protects against the sun with 50+ UPF
- Tagless label
- Raglan sleeves



Catalan



Z-Stripe



Optic



Clean Sheet



Whirlwind



Center Stripe



LADIES FREESTYLE TURBO SUBLIMATED SOCCER SHORTS

321812 Ladies S-2XL MSRP 41.00

- 100% polyester wicking smooth knit
- Garment protects against the sun with 50+ UPF
- Tagless label
- Covered elastic waistband with inside drawcord
- 5-inch inseam



Clean Sheet



Whirlwind



Center Stripe



HAWK EVOLUTION



Back

COORDINATING ADULT/YOUTH
322990/322991 pg. 13



NEW

LADIES HAWK EVOLUTION JERSEY

322992 Ladies XS-2XL MSRP 20.00

- 100% polyester wicking knit with color secure® technology that helps prevent dye migration
- 90% polyester/10% spandex wicking mesh inserts with color secure® technology
- Tear away label
- Low profile tapered collar
- Raglan sleeves
- Side vent detail



BLACK/WHITE 420 COL BLUE/BLACK 292 DK GREEN/WHITE 438 GOLD/WHITE 245 GRAPHITE/WHITE R04



KELLY/BLACK 342 MAROON/WHITE 380 NAVY/LIME 666 NAVY/WHITE 301 ORANGE/WHITE 320



POWER BLUE/WHITE 834 POWER ORANGE/BLACK Y59 POWER YELLOW/BLACK 457 PURPLE/WHITE 450 ROYAL/GOLD 281



ROYAL/WHITE 280 SCARLET/WHITE 408 SILVER/BLACK 098 WHITE 005 TEAL/BLACK 435



Back

NEW LADIES HAWK EVOLUTION | pg. 39

COORDINATING ADULT/YOUTH
322870/322871 pg. 24



LADIES HAWK JERSEY

322872 Ladies XS-2XL MSRP 20.80

- 100% polyester wicking knit
- Two piece collar
- Set-in sleeves



BLACK/
WHITE
420

COLUMBIA
BLUE/
BLACK
292

FOREST/
WHITE
436

GRAPHITE/
WHITE
R04

KELLY/
BLACK
342



LIME/
WHITE
693

MAROON/
WHITE
380

NAVY/
WHITE
301

ATHLETIC
GOLD/
WHITE
596

ORANGE/
WHITE
320



POWER
BLUE/
WHITE
834

POWER
ORANGE/
BLACK
Y59

POWER
YELLOW/
BLACK
457

RASPBERRY/
WHITE
514

ROYAL/
ATHLETIC
GOLD
W84



ROYAL/
WHITE
280

SCARLET/
WHITE
408

WHITE/
WHITE
230

VEGAS GOLD/
WHITE
250

NFHS WHITE OPTION

THE SOLID WHITE LADIES
JERSEY IS NFHS AWAY TEAM
UNIFORM COMPLIANT WHEN
PAIRED WITH ANY WHITE SOCK



COORDINATING ADULT/YOUTH
1517/1518 pg. 19



LADIES CUTTER JERSEY

1522	Ladies	S-2XL	MSRP 16.40
1523	Girls	S-L	MSRP 15.40

- 100% polyester wicking knit with color secure® technology that helps prevent dye migration
- 92% polyester/8% spandex wicking pinhole mesh underarms
- Tagless label
- Raglan sleeves
- Contoured bottom



BLACK/
GOLD
421 BLACK/
WHITE
420 DARK
GREEN/
WHITE
438 MAROON/
WHITE
380 NAVY/
WHITE
301 ORANGE/
WHITE
320



POWER
PINK/
WHITE
468 PURPLE/
WHITE
450 ROYAL/
ORANGE
284 ROYAL/
WHITE
280 RED/
BLACK
407 RED/
WHITE
400



VEGAS
GOLD/
WHITE
250 WHITE/
BLACK
226 WHITE/
NAVY
221 WHITE/
RED
225 WHITE/
ROYAL
220



229579

229431

229580

COORDINATING HOODIE
222584



Mesh



Zippered leg



229779

229007

229780



Ladies Fit



Zipper on Outside Lower Leg

Warmth **5** / 10 Weight **Light** 

LIMITLESS JACKET

229579	Adult	S-3XL	MSRP 50.20
229679	Youth	S-XL	MSRP 49.20
229779	Ladies	XS-2XL	MSRP 50.20

- Dry-Excel™ 100% polyester wicking double knit with mesh texture
- Ladies' fit on 229779
- Raglan sleeves
- Front zippered pockets



BLACK/WHITE 420 NAVY/WHITE 301 CARBON/WHITE F52 ROYAL/WHITE 280 SCARLET/WHITE 408 BLACK/BLACK 425 MAROON/WHITE 380



DARK GREEN/WHITE 438 BLACK/WHITE/GOLD 532 NAVY/WHITE/GOLD W57 BLACK/WHITE/ORANGE W12 BLACK/WHITE/SCARLET C39 NAVY/WHITE/SCARLET W53

Warmth **5** / 10 Weight **Light** 

LIMITLESS PANT

229580	Adult	S-3XL	MSRP 45.60
229680	Youth	S-XL	MSRP 44.60
229780	Ladies	XS-2XL	MSRP 45.60

- Dry-Excel™ 100% polyester wicking double knit mesh texture
- Pinhole micromesh back knee inserts
- Ladies' fit on 229780
- Covered elastic waistband with inside drawcord
- Side seam pockets
- Tapered leg
- Zipper on outside lower leg



BLACK/BLACK 425 BLACK/WHITE 420 CARBON/WHITE F52 DARK GREEN/WHITE 438 MAROON/WHITE 380 NAVY/WHITE 301 ROYAL/WHITE 280 SCARLET/WHITE 408



COORDINATING PULLOVER
229533/229633/229733



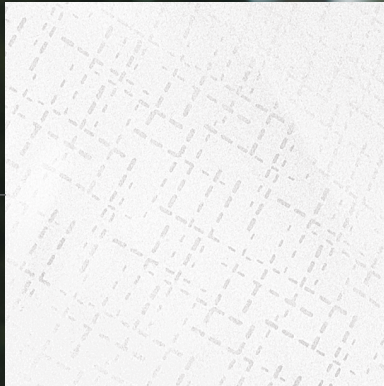
229528

229728

229432

229731

229531



Embossed Pattern Insert



Ladies Fit

Warmth 5 / 10

Weight Light



SERIESX JACKET

229528	Adult	S-3XL	MSRP 68.00
229628	Youth	S-XL	MSRP 67.00
229728	Ladies	XS-2XL	MSRP 68.00

- Micron™ polyester is a lightweight, wind/water-resistant fabric
- 100% polyester micromesh lining
- Ladies' fit on 229728
- 3-piece hood with spandex binding
- Set-in sleeves
- Front zippered pockets
- Elastic cuffs
- Adjustable bottom hem with hidden shockcord closure in right pocket on Adult
- Alternate pants: 229095



BLACK/WHITE 420 CARBON/WHITE F52 NAVY/WHITE 301 BLACK/ORANGE 423 BLACK/SCARLET 500 DARK GREEN/WHITE 438 MAROON/WHITE 380 NAVY/SCARLET S20 ROYAL/WHITE 280 SCARLET/WHITE 408



Zipper on Outside Lower Leg

Warmth 5 / 10

Weight Light



SERIESX PANT

229531	Adult	S-3XL	MSRP 54.60
229631	Youth	S-XL	MSRP 53.60
229731	Ladies	XS-2XL	MSRP 54.60

- Micron™ polyester is a lightweight, wind/water-resistant fabric
- 100% polyester micromesh lining
- Ladies' fit on 229731
- Exposed brushed elastic waistband with inside drawcord
- Side seam pockets
- Tapered leg
- Articulated seaming at the knees
- Covered elastic cuff at leg opening
- Zipper on outside lower leg



BLACK 080 CARBON J96 NAVY 065 BLACK/WHITE 420 ROYAL/WHITE 280 SCARLET/WHITE 408 DARK GREEN/WHITE 438 MAROON/WHITE 380

Back Welt Pocket



RETRO COLLECTION



Ladies Fit



Zipper on Outside Lower Leg

Warmth 5 / 10

Weight Light



RETRO GRADE JACKET

229561	Adult	S-3XL	MSRP 66.60
229661	Youth	S-XL	MSRP 65.60
229761	Ladies	XS-2XL	MSRP 66.60

- Dry-Excel™ 100% polyester performance terry
- Ladies' fit on style 229761
- 3-piece mesh lined hood with spandex binding
- Raglan sleeves
- Front pockets
- Spandex bound cuff

AVAILABLE IN ADULT & LADIES ONLY



BLACK/ ORANGE 423	BLACK/ SCARLET 500	BLACK/ WHITE 420	GRAPHITE/ WHITE R04	PURPLE/ WHITE 450	FOREST/ WHITE 436	MAROON/ WHITE 380
-------------------------	--------------------------	------------------------	---------------------------	-------------------------	-------------------------	-------------------------



NAVY/ SCARLET S20	NAVY/ WHITE 301	ROYAL/ WHITE 280	SCARLET/ WHITE 408
-------------------------	-----------------------	------------------------	--------------------------

Warmth 5 / 10

Weight Light



RETRO GRADE PANT

229562	Adult	S-3XL	MSRP 55.60
229662	Youth	S-XL	MSRP 54.60
229762	Ladies	XS-2XL	MSRP 55.60

- Dry-Excel™ 100% polyester performance terry
- Ladies' fit on style 229762
- Exposed brushed elastic waistband with inside drawcord
- Front pockets
- Back welt pocket
- Tapered leg

AVAILABLE IN ADULT & LADIES ONLY



BLACK/ WHITE 420	GRAPHITE/ WHITE R04	NAVY/ WHITE 301	ROYAL/ WHITE 280	SCARLET/ WHITE 408	PURPLE/ WHITE 450	FOREST/ WHITE 436	MAROON/ WHITE 380
------------------------	---------------------------	-----------------------	------------------------	--------------------------	-------------------------	-------------------------	-------------------------



MEDALIST 2.0 COLLECTION

COORDINATING PULLOVER
4386/4388



Ladies Fit



Zipper on
Outside
Lower Leg

Warmth **5** / 10

Weight **Light**

MEDALIST JACKET 2.0

4395	Adult	S-3XL	MSRP 40.60
4396	Youth	XS-L	MSRP 39.60
4397	Ladies	XS-2XL	MSRP 40.60

- Heavyweight 100% polyester matte brushed tricot
- Ladies' fit on style 4397
- Heat sealed label
- Set-in sleeves
- Front seam pockets
- Self-fabric cuffs
- Alternate pants 7726/7728, 7731/7732/7733



BLACK/
GOLD
421

BLACK/
ORANGE
423

BLACK/
RED
424

BLACK/
VEGAS
GOLD
255

BLACK/
WHITE
420

DARK
GREEN/
WHITE
438

GRAPHITE/
WHITE
R04



KELLY/
WHITE
340



MAROON/
WHITE
380



NAVY/
VEGAS
GOLD
256



NAVY/
WHITE
301



PURPLE/
WHITE
450



RED/
WHITE
400



ROYAL/
WHITE
280

Warmth **5** / 10

Weight **Light**

MEDALIST PANT 2.0

7760	Adult	S-3XL	MSRP 36.20
7761	Youth	XS-L	MSRP 35.20
7762	Ladies	XS-2XL	MSRP 36.20

- Heavyweight 100% polyester matte brushed tricot
- Ladies' fit on style 7762
- Heat sealed label
- Covered elastic waistband with inside drawcord
- Side seam pockets



Back Yoke



BLACK/
GOLD
421

BLACK/
ORANGE
423

BLACK/
RED
424

BLACK/
VEGAS
GOLD
255

BLACK/
WHITE
420

DARK
GREEN/
WHITE
438

GRAPHITE/
WHITE
R04

KELLY/
WHITE
340

MAROON/
WHITE
380

NAVY/
VEGAS
GOLD
256

NAVY/
WHITE
301

PURPLE/
WHITE
450

RED/
WHITE
400

ROYAL/
WHITE
280



Inside divider for shoes or damp items



Mesh ball holder fits volleyball, soccer or basketballs



Without mesh ball holder

Mesh ball holder fits volleyball, soccer or basketballs, & stashes away when not in use



Reinforced multiuse side pockets with pass-thru strap for bat or lacrosse stick



FREE FORM BACKPACK

327895 13" W x 19" H x 9"D MSRP 43.00

- 900-denier heavyweight 100% polyester with PU coating
- Matte PVC bottom and sides for durability
- Large main compartment for easy decoration
- Zippered pocket with brushed interior for valuables
- Two mesh side pockets
- Smooth finish top handle for comfort
- Padded back & shoulder straps
- Hidden key clip
- Internal zippered mesh valuables pocket



BLACK
O80



CARBON
HEATHER
E83



GRAPHITE
O59



NAVY
O65



ROYAL
O60



SCARLET
O83



ALL SPORT BACKPACK

327890 12"W x 18.5"H x 7"D MSRP 42.40

- 100% polyester heavy denier
- Large main interior compartment
- Front zipper pocket with deep, interior pouch holds shoes or accessories
- Side pouch pockets for water bottle with pass-thru for lacrosse stick or bat



BLACK/
GRAPHITE/
BLACK
Q92



GRAPHITE/
GRAPHITE/
BLACK
Q83



FOREST/
GRAPHITE/
BLACK
Q88



MAROON/
GRAPHITE/
BLACK
Q89



NAVY/
GRAPHITE/
BLACK
Q93



ORANGE/
GRAPHITE/
BLACK
Q90



PURPLE/
GRAPHITE/
BLACK
Q91



ROYAL/
GRAPHITE/
BLACK
Q84



SCARLET/
GRAPHITE/
BLACK
Q86



NEW

UNITED BACKPACK

327930 11.5"W x 19"H x 9.5"D MSRP 61.00

- 600-denier polyester with PVC coating
- 210-denier nylon with PVC coating
- Large main interior compartment with two corded zipper pulls
- Large front ventilated compartment with two corded zipper pulls
- Zippered pocket with brushed interior for valuables
- Front pocket with corded zipper pull with hidden inside mesh ball holder that fits Volleyball, Soccer or Basketballs
- Two mesh side pockets
- Adjustable buckles on sides to secure baseball bat
- Internal zippered mesh valuables pocket
- Key clip inside main compartment
- Padded back for support and comfort
- Web handle at top of backpack
- Adjustable padded shoulder straps



BLACK
080

GRAPHITE/
BLACK
172

NAVY/
BLACK
308



PLAYER BACKPACK

327850 18"W x 17"H x 9"D MSRP 39.40

- Heavy duty 600-denier polyester with soft PVC backing
- Adjustable padded shoulder straps
- Hand strap



ATHLETIC
GOLD/
BLACK/
WHITE
657

BLACK/
BLACK/
WHITE
420

FOREST/
BLACK/
WHITE
148

GRAPHITE/
BLACK/
WHITE
U73

MAROON/
BLACK/
WHITE
524



NAVY/
BLACK/
WHITE
311

ORANGE/
BLACK/
WHITE
322

PURPLE/
BLACK/
WHITE
497

ROYAL/
BLACK/
WHITE
526

SCARLET/
BLACK/
WHITE
952

Mesh paneled
zippered
interior ball
compartment

Mesh ball
holder fits
volleyball,
soccer or
basketballs



Two zippered side
compartments
with mesh panels



Back



Back





COOLCORE® LONG SLEEVE COMPRESSION TEE



R20CPM Adult S-3XL MSRP 35.80

- 84% polyester/16% spandex elastane Xtreme compression cloth with Coolcore® technology
- 92% polyester/8% elastane stretch mesh inserts with Coolcore® technology
- Garment protects against the sun with 50+ UPF
- Tagless label
- Raglan sleeves



COOLCORE® HALF SLEEVE COMPRESSION TEE



R21CPM Adult S-3XL MSRP 33.00

- 84% polyester/16% spandex elastane Xtreme compression cloth with Coolcore® technology
- 92% polyester/8% elastane stretch mesh insert on center back and underarm
- Garment protects against the sun with 50+ UPF
- Tagless label
- Raglan sleeves
- Dropped tail



COOLCORE® COMPRESSION 7/8 TIGHT



R23CPM Adult XS-3XL MSRP 33.80

- 86% polyester/14% spandex elastane Xtreme compression cloth with Coolcore® technology
- 92% polyester/8% elastane stretch mesh insert at back of knee and gusset
- Garment protects against the sun with 50+ UPF
- Ultra tight fit
- Tagless label
- Branded soft brushed back exposed elastic waistband provides comfort







MOMENTUM TEAM COLLECTION



MOMENTUM TEAM TEE

223501 Adult S-3XL MSRP 15.40
4XL-6XL in select colors

223601 Youth XXS-XL MSRP 14.40

223701 Ladies S-3XL MSRP 15.40

- Dry-Excel™ 100% polyester interlock smooth knit with color secure® technology that helps prevent dye migration
- Ladies' Fit on style 223701
- Tagless label
- Contrast color V-neck on Ladies
- Garment protects against the sun with 45+ UPF
- Set-in sleeves

AVAILABLE IN ADULT 4XL-6XL



BLACK/
IRON
62U

BLACK/
WHITE
420

NAVY/
WHITE
301

ROYAL/
WHITE
280

SCARLET/
BLACK
406

WHITE/
IRON
61U

AVAILABLE IN ADULT
S-3XL & YOUTH



DK GREEN/
BLACK
444

ORANGE/
WHITE
320

AVAILABLE IN ADULT
S-3XL & LADIES



COLUMBIA
BLUE/
WHITE
293

AVAILABLE IN ADULT S-3XL



GOLD/
WHITE
245

KELLY/
WHITE
340

ROYAL/
GOLD
281

SCARLET/
NAVY
W86

VEGAS GOLD/
BLACK
252

AVAILABLE IN ADULT S-3XL, YOUTH & LADIES



IRON/
WHITE
99D

MAROON/
BLACK
388

PURPLE/
BLACK
496

ROYAL/
BLACK
289

SCARLET/
WHITE
408



MOMENTUM COLLECTION



MOMENTUM TEE

222818	Adult	S-4XL	MSRP 11.00
		5XL & 6XL in select colors	
222819	Youth	XXS-XL	MSRP 11.00
222820	Ladies	S-3XL	MSRP 11.00
222821	Girls	S-L	MSRP 11.00

- Dry-Excel™ 100% polyester interlock smooth knit with color secure® technology that helps prevent dye migration
- Ladies' fit on 222820
- Tagless label
- Garment protects against the sun with 45+ UPF
- Set-in sleeves

AVAILABLE IN ADULT 5XL-6XL



BLACK 080 GRAPHITE 059 NAVY 065 ROYAL 060 SCARLET 083 SILVER 099 WHITE 005

AVAILABLE IN ADULT/YOUTH/LADIES ONLY



CARDINAL J36 DARK GREEN 035 ELECTRIC ORANGE 79N KELLY GREEN 030 VEGAS GOLD 023



COLUMBIA BLUE 089 ELECTRIC YELLOW T52 GOLD 025 LIME 096 MAROON 745 ORANGE 029

AVAILABLE IN ADULT & YOUTH ONLY



POWER BLUE 812 POWER PINK 809 PURPLE 747 TEAL 063 SAFETY YELLOW 243 OLIVE 039



Non-branded tagless label



NEXGEN WICKING TEE

790	Adult	S-3XL	MSRP 7.20
		4XL in select colors	
791	Youth	XS-XL	MSRP 7.20
1790	Ladies	XS-3XL	MSRP 7.20

- 100% polyester wicking knit with color secure® technology that helps prevent dye migration
- Ladies' fit on style 1790
- Non-branded tagless label
- Set-in sleeves
- Safety Yellow is ANSI certified

AVAILABLE IN ADULT 4XL



BLACK 080 NAVY 065 ROYAL 060 SCARLET 083 SILVER 099 WHITE 005

AVAILABLE IN ADULT & YOUTH ONLY



OLIVE 039 TEAL 063 ELECTRIC ORANGE 79N VEGAS GOLD 023

AVAILABLE IN ADULT ONLY



COYOTE 208



COLUMBIA BLUE 089 DARK GREEN 035 GOLD 025 GRAPHITE 059 KELLY 030 MAROON 745

AVAILABLE IN ADULT & LADIES ONLY



ORANGE 029 POWER BLUE 812 POWER PINK 809 PURPLE 747 SAFETY YELLOW* 243

*SAFETY YELLOW IS ANSI CERTIFIED





SCRIMMAGE VEST

321200	Adult	One Size	MSRP 4.60
321201	Youth	XS	MSRP 3.60
321201	Youth	One Size	MSRP 3.60

- 100% polyester tricot mesh
- Improved fit, longer length



OCTANE SHORTS

1425	Adult	S-3XL	MSRP 8.40
1426	Youth	XXS-L	MSRP 8.40

- 100% polyester wicking knit
- Full-cut
- Tagless label
- Covered elastic waistband with inside drawcord
- 7-inch inseam
- Youth inseam graded



ASB KIT PACKAGES



CUTTER
PACKAGE



HAWK EVOLUTION
PACKAGE



From Youth, Ladies to Adult featuring a full spectrum of colors & sizes ready to ship.

Ask your local sales rep for details



WEMBLEY

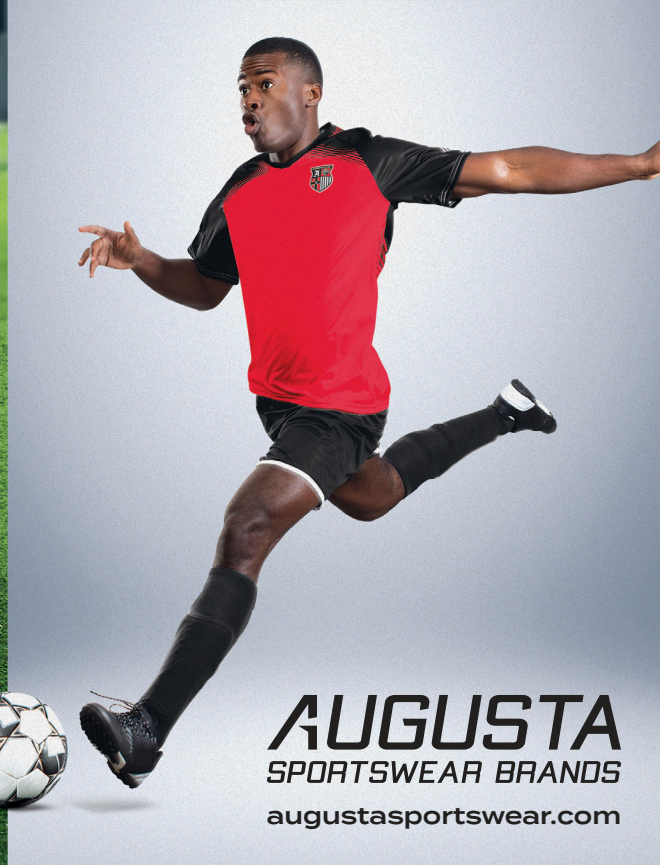
PACKAGE



SHEFFIELD

PACKAGE





AUGUSTA
SPORTSWEAR BRANDS
augustasportswear.com